

Cambridge Biomedical Campus

Development overview

January 2014

Elizabeth Rolph

Principal Planner, New Neighbourhoods



Sites/buildings with outline approval



Sites at Reserved Matters Stage



Sites with Reserved Matters applications approved



Sites Under Construction



Completed sites/buildings



Cambridge Biomedical Campus

215sq m floor space comprising of clinical research, treatment, biomedical research and development, and other support uses with use class A1, A3, B1 and D1



Laboratory of Molecular Biology (LMB Building)

2000 sq m medical research laboratories for the Medical Research Council plus associated accommodation including restaurant, lecture theatre and energy centre

The Forum, uses will include:

- Education centre
- Private hospital
- Commercial hotel



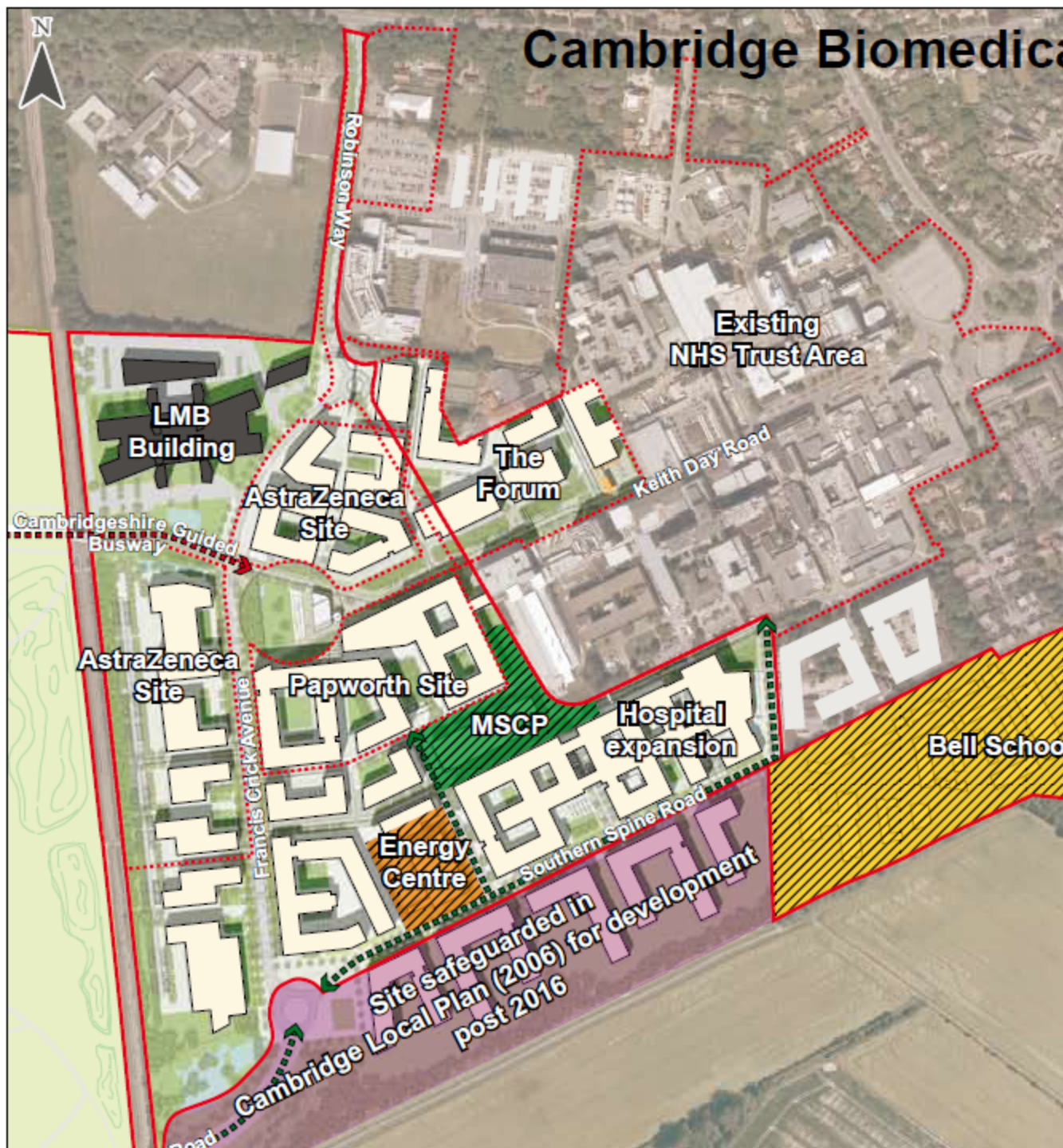
Multi Storey Car Park (MSCP)

- 1,228 Car parking spaces



Energy Centre/Incinerator

- To provide low carbon heating, hot water and electricity for the Addenbrooke's and Rosie hospitals and future developments on the wider Cambridge Biomedical Campus site





06/0976/OUT: Clinical Research and Treatment & Biomedical & Biotech R&D

Progress to date

- **Medical Research Council Laboratory of Molecular Biology** – occupied
- **Multi-storey car park** – to open May 2014
- **Energy Centre** – construction to start mid 2014

Multi Storey Car Park



Energy Centre



Developments coming forward on this site

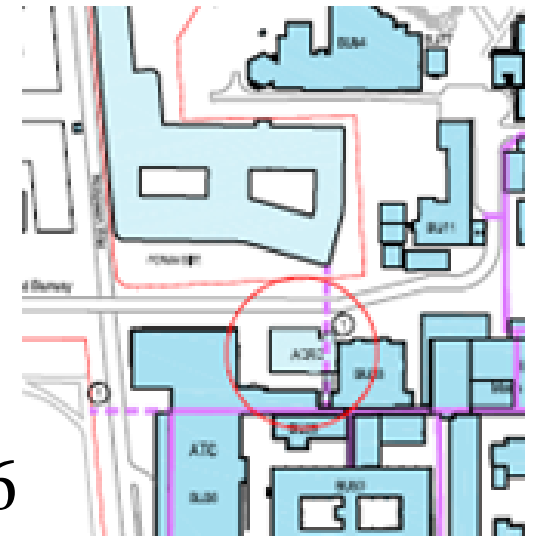
- **Papworth** - application expected April 2014
- **AstraZeneca** - Application expected autumn 2014
- **Circus** – Public Realm area - Design consideration early 2014

The Forum

- Outline approval in 2008 for learning centre, conference centre, hotel & car parking, renewed in 2011
- Proposal now to include private hospital, so Full application required.
- Application to be submitted end January 2014, Planning Committee April 30th.

Other developments

- Extension to Addenbrooke's Clinical Research Centre (ACRC) opposite Forum – open 2016
- Cancer Walk-in Centre – Site to be confirmed, target opening 2018
- New clinical space - Possibly Children's Hospital – timing tbc
- Interest in R&D for University and others



Site for ACRC Extension



Proposed ACRC extension – view from Forum



CUH clinical accommodation

Energy Centre

Papworth Hospital

Astrazeneca

Car Park

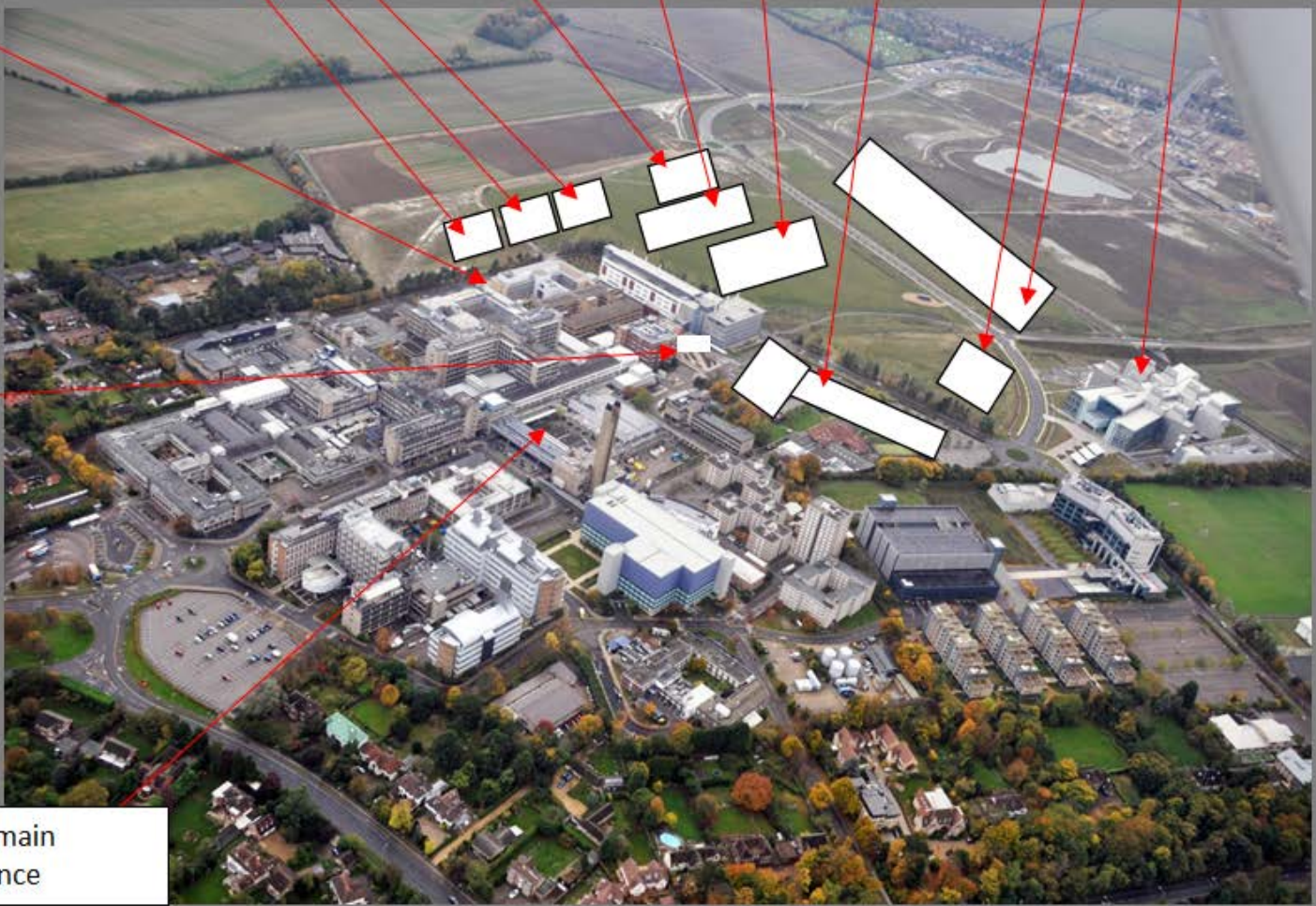
Forum Development

MRC LMB

New Rosie Hospital

ACRC

CUH main entrance



CBC Masterplan

- 1999: Cambridge University Hospitals NHS Foundation Trust produced the **2020 Vision** to develop Addenbrooke's into the CBC
- 2009: **Strategic Masterplan** published by CUH Trust – Set of documents: Design Statement, Guidelines and Estates Strategy
- Still guides development coming forward
- Position Statement available

Cancer Research UK

Medical Research Council LMB building

Main public space "The Circus"

"Addenbrooke's Square"

High Street

Papworth site

Addenbrooke's Treatment Centre

Boulevard
Francis Crick Avenue

2020 Clinical
Developments

Facilities Management
and Energy Centre

CBC Expansion Land

University "island"

Main site entrance

Outpatients Department

Gallery

Wards

Forvie site development

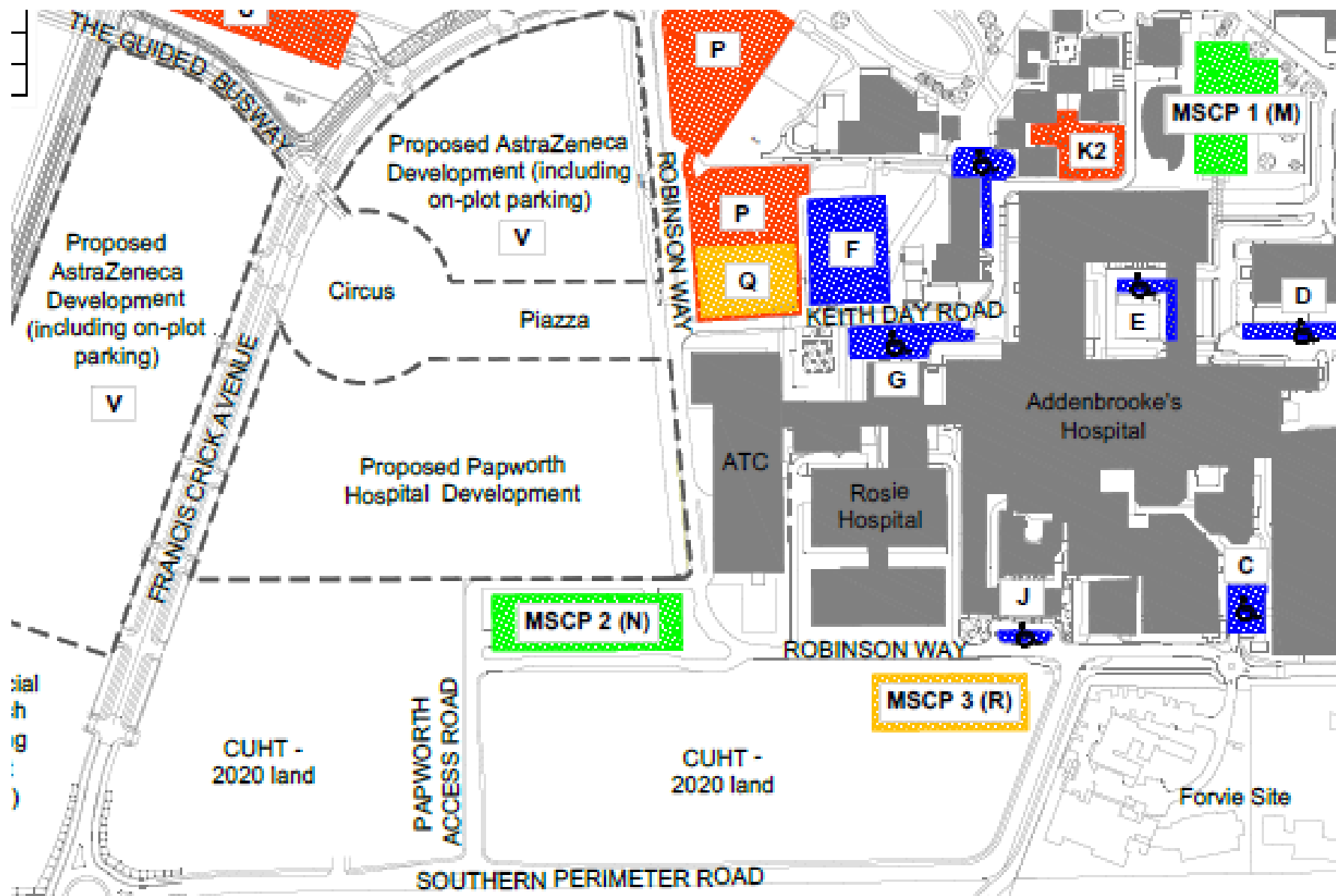


- Masterplan being updated as developments come forward
- Includes new High Street from Circus through to main site entrance, but uncertainty re full delivery
- Improvements to areas between sites, eg Robinson Way, will be sought through proposals



Parking Strategy

- May 2014: MSCP to open, initially to replace existing parking on Forum Site and elsewhere
- Forum to include parking for hospital and hotel
- AstraZeneca to provide own parking
- 2017: MSCP to serve Papworth. Additional MSCP required for displaced parking.
- Updated Parking Strategy to be submitted to include management of car parks
- Strategy reviewed as developments come forward



Presentation available on Website:
Council and Democracy/ Meetings

To follow

The Forum:
St.Clair Armitage and NBBJ

Papworth:
Ken Brewer and Skanska